



ETIP SNET

EUROPEAN
TECHNOLOGY AND
INNOVATION
PLATFORM

SMART
NETWORKS FOR
ENERGY
TRANSITION

PLAN.
INNOVATE.
ENGAGE.

WG2: THE ETIP SNET ROADMAP 2020-30

QUESTIONS 1 - 3

Q1: Review slides 3 - 6: Are the different concepts presented clearly exposed and understandable? Do you agree on the basic concept of the ETIP SNET roadmap as presented?

Q2: Review slide 8: Is the general concept of the ETIP SNET Roadmap clearly exposed and understandable? Do you agree with it?

Q3: Based on the information provided from slides 9 to 17 (Integration Objectives, Integration Enablers, Integration Roles, Integration Project Types, Integration Actions, Mapping) PLEASE review in the excel sheet: list of Integration Objectives (IO), list of Integration Enablers (IE)...

QUESTION 1:

General suggestions (I)

Simplify the text and PowerPoint images by **deleting repetition**

Thus, delete the words “integrated” and “functional”, since their deletion does not suggest that the actions, or actors, etc. become disintegrated or dysfunctional, and since they create wordiness which impedes the reader’s understanding of content.

and **replacing words which do not evoke** physical images with those which do.

Furthermore, replace the words which do not evoke physical images (“roles”, “enablers”) with the ones that do (“**actors**” and “**tools**”). We then probably should enlarge the number of actors.

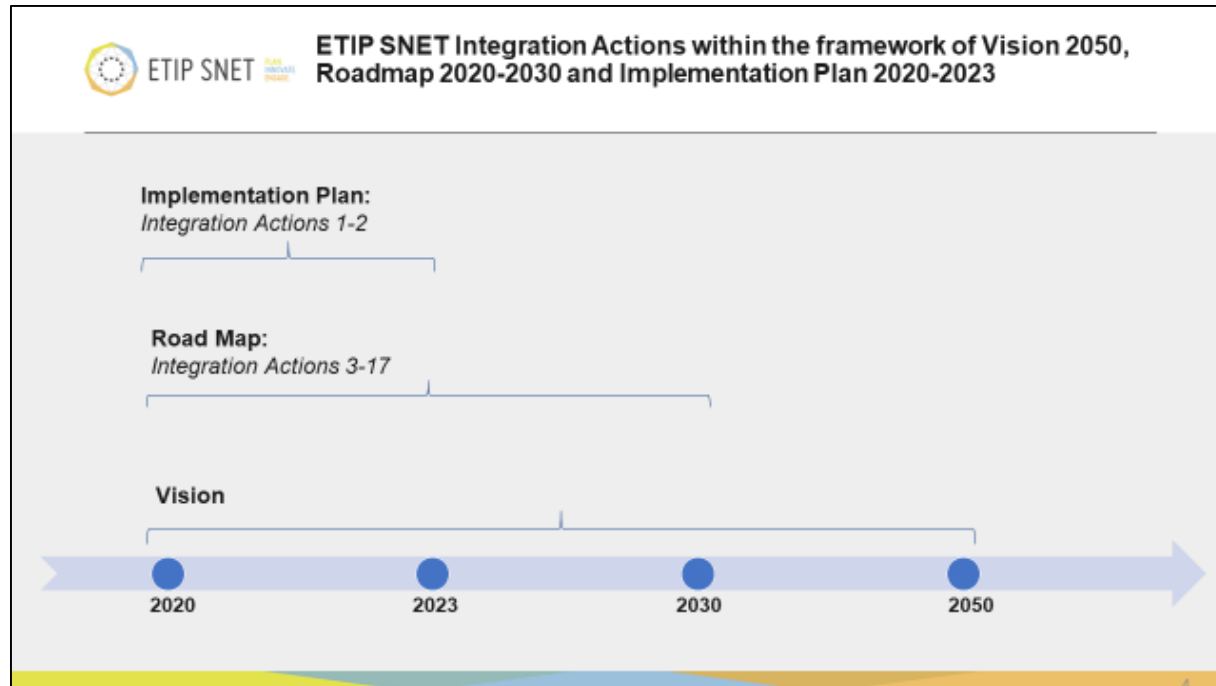
In short, the story of the road map and implementation plan can be boiled down to the following:
“6 actors developing 25 tools (or solutions) carry out 17 actions of 3 different types to reach 23 objectives”.

Homogenize **color codes** across the whole presentation (and documents) to facilitate understanding

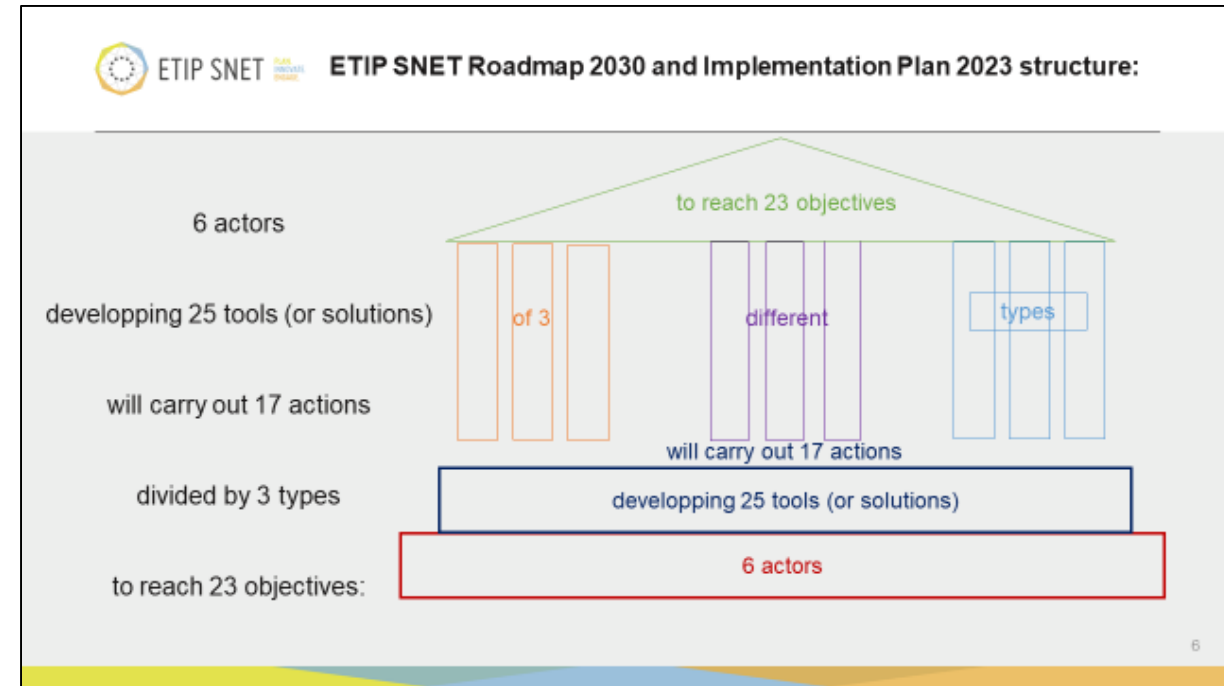
QUESTION 1: General suggestion (II)

Based on that, for the same purposes of simplification and readability,

original slide 4 in the PowerPoint
can be replaced with:

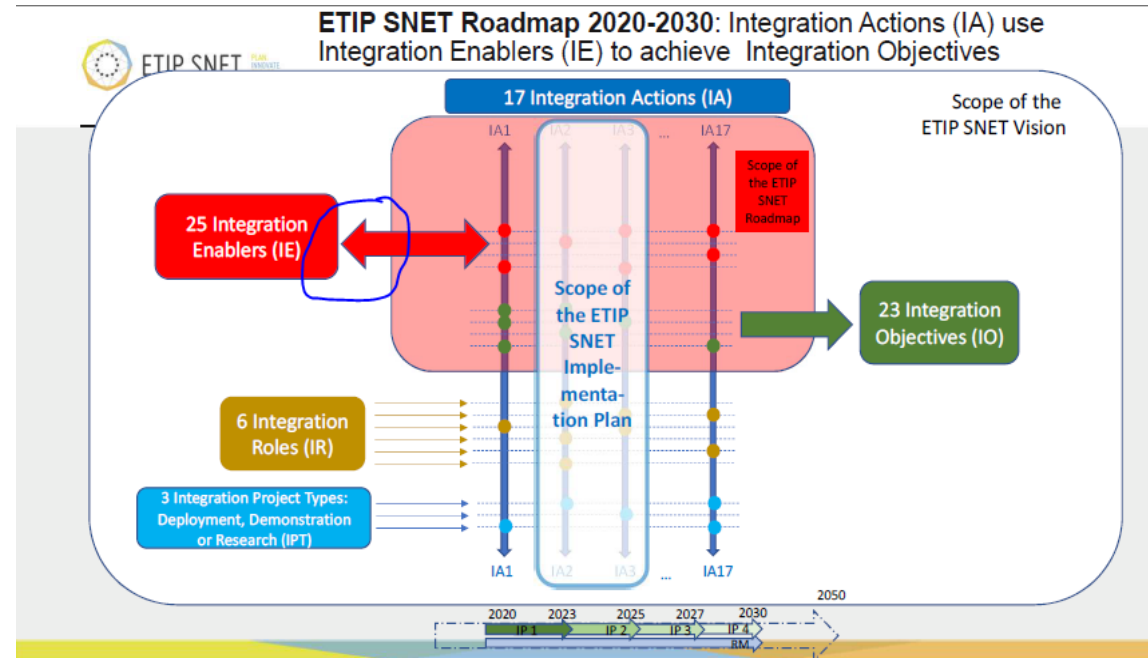


original slide 4 in the PowerPoint
can be replaced with:



Not clear the **difference between the Actions of the Roadmap and the Actions of the Implementation Plan**, as both seem to have enablers, objectives, roles and type.

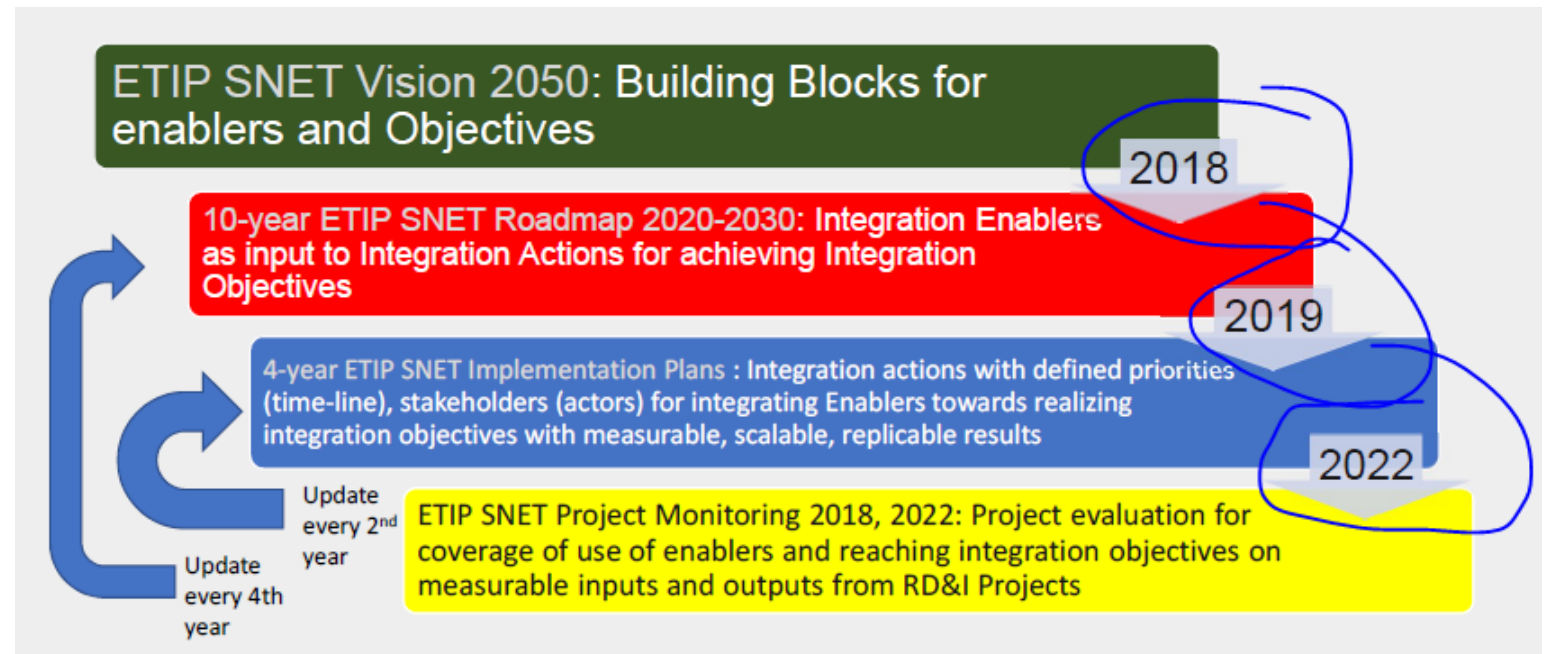
The arrow for IE indicates a feedback loop. Shouldn't it be an arrow **from left to right only**?



The time line that appears at the bottom of slide 4 immediately conveys the message about the time scale of ETIP SNET Vision 2050, Roadmap and Implementation plan, and it creates a strong connection with slide 6. However, it is **hard to notice** it at the moment has **nothing to do with the formal logic** shown in the Scope of the vision

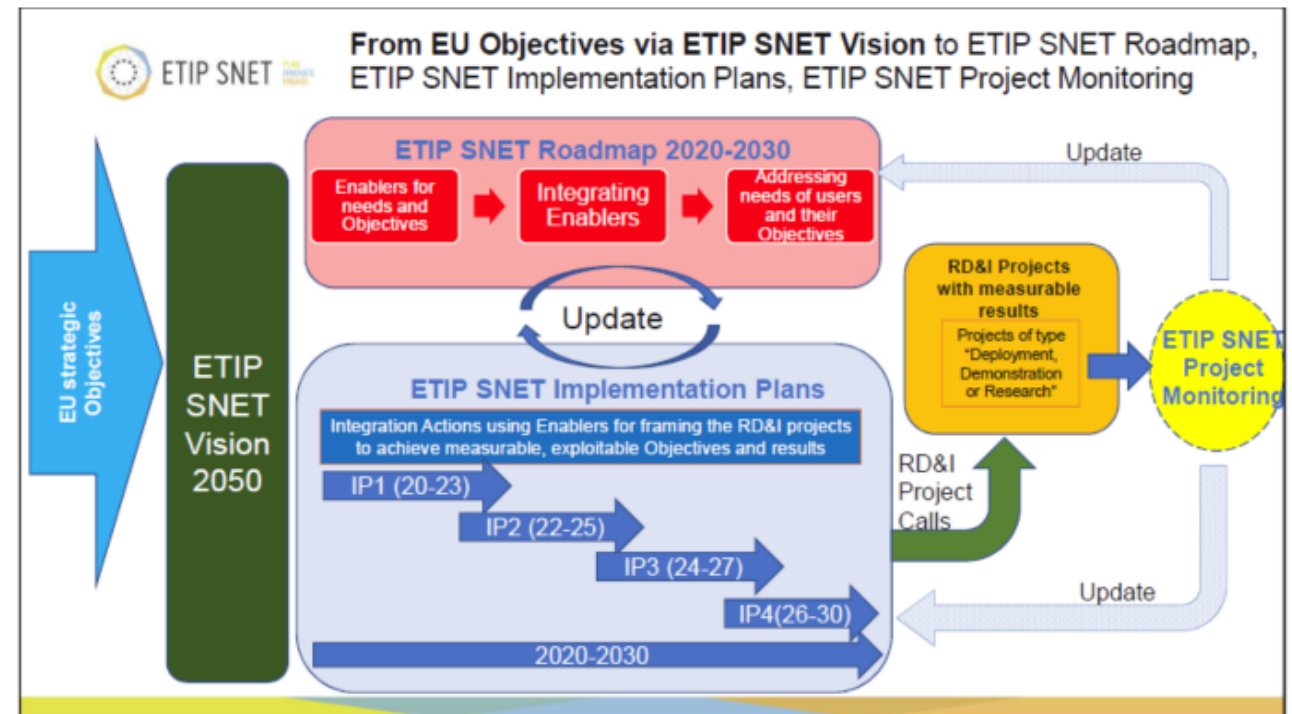
The overall idea is clear but the reference to building blocks, enablers, objectives, needs, etc. is a bit confusing.

What is the intention of the years in the arrows?



This slide is a bit **confusing and somewhat repetitive** (with slide 3), particularly the reference to building blocks, enablers, objectives, needs, etc.

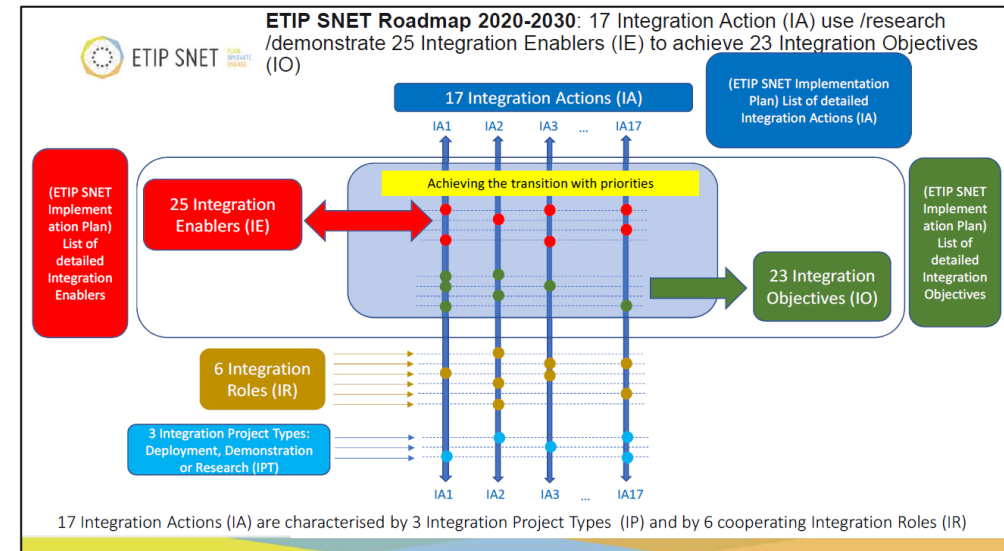
EU objectives shaped the Vision. This has been done and won't change in short term. After the vision, we see a **continuously running processes, where a timeline applies**. It is hard to understand this easily from the graph.



The cycle/process should fit to slide 3. This means first the "Roadmap" sets the "Implementation Plan". The projects are monitored and monitoring closes the loop with an update on the roadmap. In the picture it looks different since there is an update loop (instead of one-way) to the implementation plan

QUESTION 2: Questions / Suggestions (I)

Many concepts which seem to have similar importance. **Focus should be put in the actions (ACTIVITIES? <-> SET-Plan Implementation Plans), as the other concepts (enablers, objectives, role, types) are components of these actions → These relation (components of a bigger concept) should be highlighted**

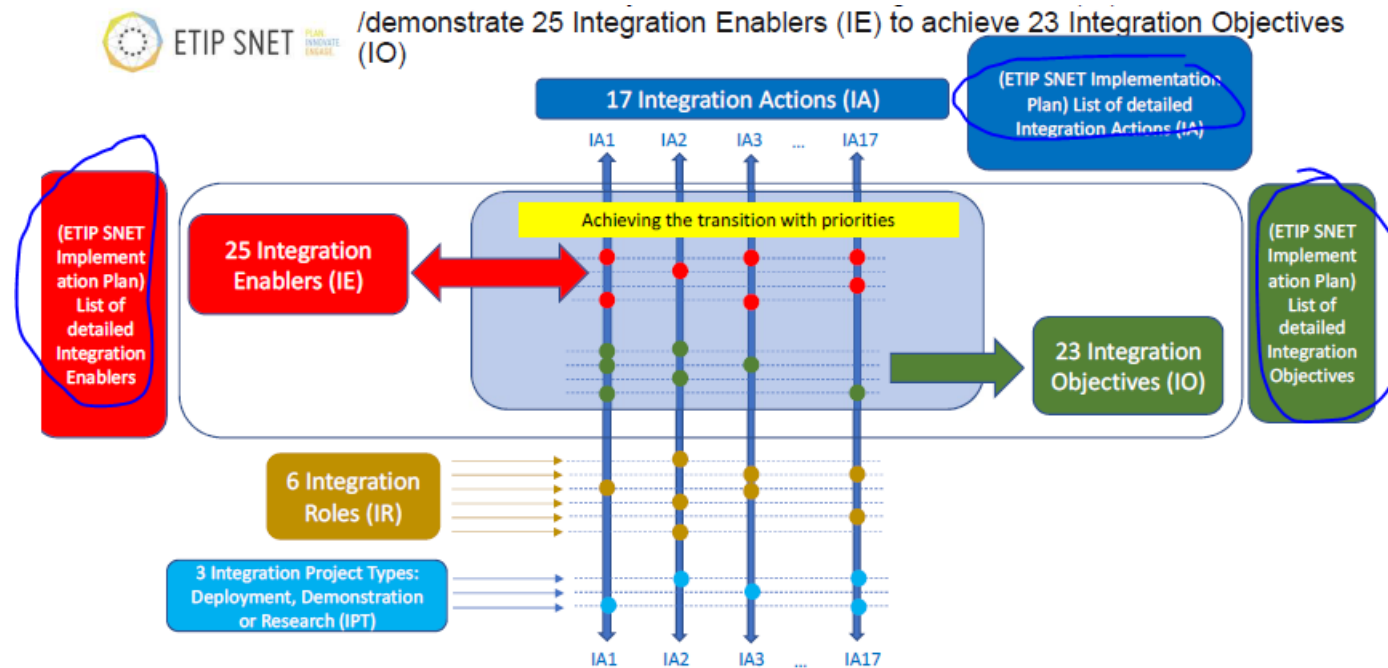


The sentence at the bottom of the slide does not add any value, we suggest **removing** it: What does it mean that an IA is characterised by IPs and IRs? It is equally characterised (or better, composed) by IEs and IOs.

The boxes “6 Integration roles (IR)” and the “3 Integration Project Types: Deployment, Demonstration or Research (IPT)” are outside the box in which Enablers and Objectives lie. This gives the impression that the identification of **integration roles and project types is not part of the Roadmap**, is this right?

QUESTION 2: Questions / Suggestions (II)

The reference to the ETIP SNET implementation plan in a slide dedicated to the Roadmap adds confusion. We believe this slide should be dedicated exclusively to describe the main aspects of the Roadmap 2020-2030.



17 Integration Actions (IA) are characterised by 3 Integration Project Types (IP) and by 6 cooperating Integration Roles (IR)

Concerning IOs:

- Some IO difficult to grasp, e.g. “Actor roles, interrelationships, inputs, outputs, time and location dependencies, success factors”
- Within IO1 (Sustainability and circularity) → add critical raw materials
- Minimum resource consumption, high recycling rate
- Change of Citizen behaviour towards energy saving

Concerning IEs:

- Some discussions on whether non-renewable (fossil) generation should be an enabler → focus on decarbonization
- New enabler proposed on CO2 capture and utilization enabler

Concerning IR:

- Some overlaps between consumers and citizens (?)



ETIP SNET

PLAN.
INNOVATE.
ENGAGE.

**Thank you for your
attention !**